

**OPTIMUS TUTORIAL**

[https://www.youtube.com/watch?v=gQLDTIh\\_0kw](https://www.youtube.com/watch?v=gQLDTIh_0kw)



CLAMPS CONNECTION



SIDE VIEW

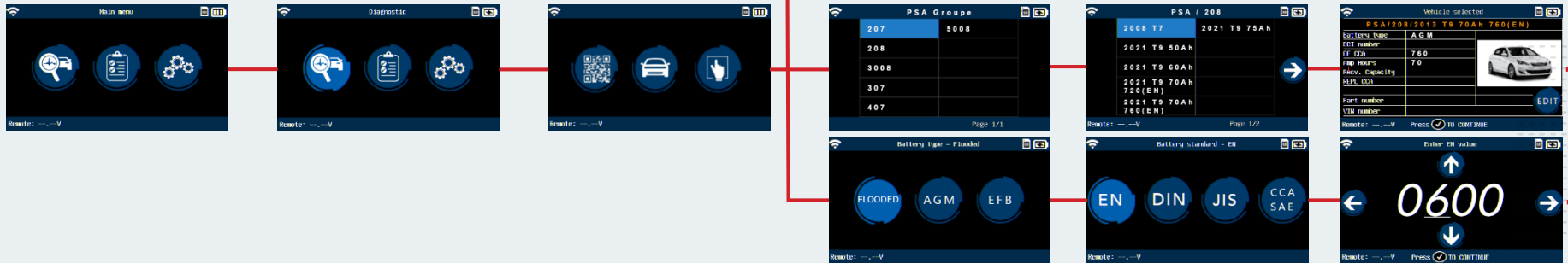


FRONT VIEW

- 1 IR THERMOMETER + LASER POINTER
- 2 OPTICAL CODE READER
- 3 WIFI CONNECTION TO THE NET
- 4 BATTERY STATUS
- 5 CLAMPS CONNECTION
- 6 WIFI NET CONNECTION INDICATOR
- 7 ERROR MODE INDICATOR
- 8 START TEST
- 9 CANCEL, PREVIOUS STEP
- 10 OK, NEXT STEP
- 11 ARROWS - UP, DOWN, LEFT, RIGHT
- 12 POWER ON/OFF
- 13 USB CONNECTION

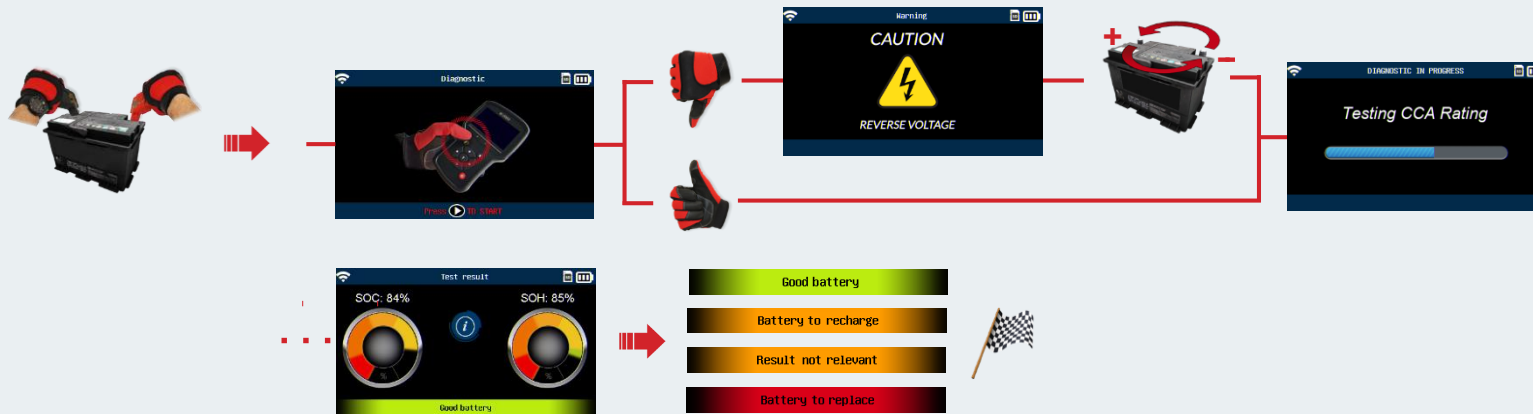
01

BATTERY TEST

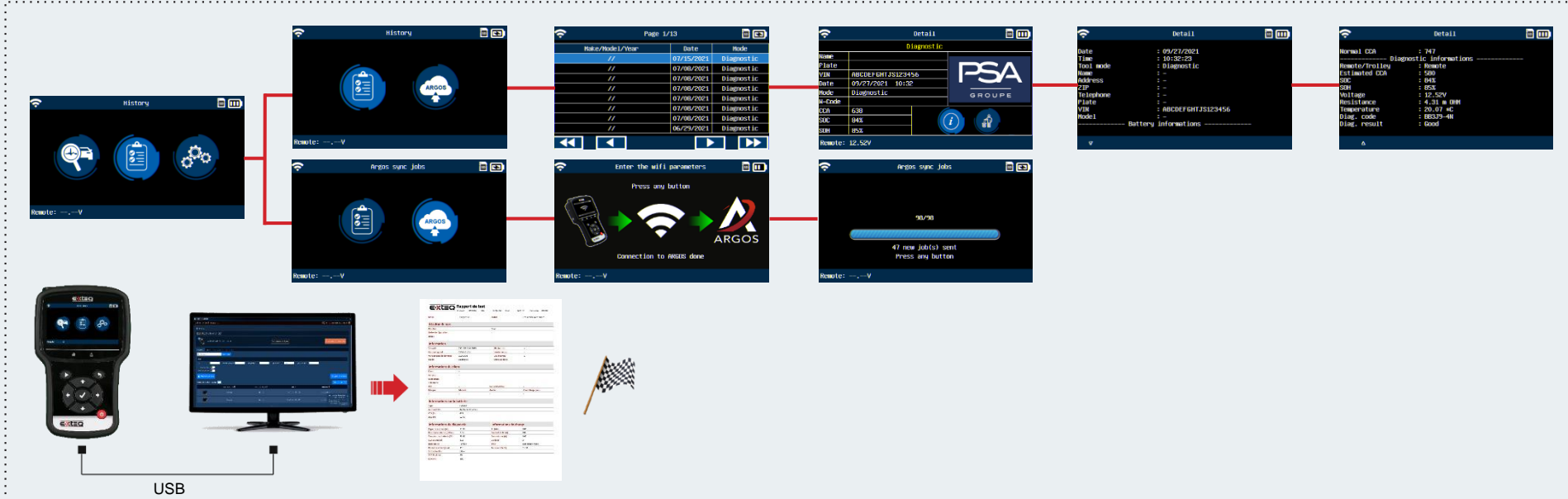


02

START TEST



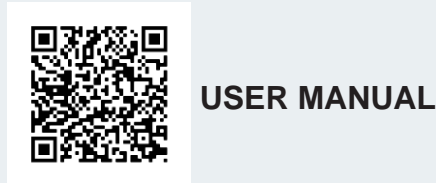
### 03 TEST RESULTS



### 04 SETTINGS (Languages, Units, date and time, WIFI, activation code, etc...)



### 05 SOFTWARE UPDATE



### ANY HELP, CONTACT

**E-XTEQ TECH SUPPORT - EMEA**  
[support.eu@e-xteq.com](mailto:support.eu@e-xteq.com)

[www.e-xteq.com](http://www.e-xteq.com)

**WARNING**

- Wear safety goggles
- Batteries produce explosive gases and can explode
- Keep flames away from batteries