



512EVO USER MANUAL

MANUAL / Reference : MAN_512EVO_V1_EN_V1.0



E-XTEQ provides International engineering / OEM's worldwide connections / High capacity production.

HIGH-TECH INDUSTRIES: RESEARCH & DEVELOPMENT, ASSEMBLY LINES, WORKSHOPS

 E-XTEQ EUROPE T.: +33 01 30 07 13 30 | E-XTEQ USA T.: (877) 453 3265 | E-XTEQ.COM



**Table of contents****Preamble****Precautions****Your 512EVO charger**

Specification

Installation

Switching on

Use

Diagnostics

Recovery mode

Vehicle start-up detection

New vehicle preparation (PDI)

Introduction

In the showroom**In the workshop****Updates****Optimus**

Optimus installation

Using Optimus

Accessories and spare parts**Technical specifications****Warranty**

Table of contents

E-XTEQ 512EVO USER MANUAL ///////////////

| | |
|--|----|
| Preamble | 3 |
| Precautions | 4 |
| Your 512EVO charger | |
| Specification | 5 |
| Installation | 6 |
| Switching on | 6 |
| Use | 7 |
| Diagnostics | 8 |
| Recovery mode | 8 |
| Vehicle start-up detection | 8 |
| New vehicle preparation (PDI) | |
| Introduction | 9 |
| In the showroom | 10 |
| In the workshop | 11 |
| Updates | |
| Optimus | |
| Optimus installation | 12 |
| Using Optimus | 15 |
| Accessories and spare parts | 17 |
| Technical specifications | 18 |
| Warranty | 19 |

Revision of the manual

We continuously work on improving our products. This is why the information contained in this manual, the device and the technical specifications may be modified without prior notification.

| EDITION / REVISION | REFERENCE | DATE WEEK/YEAR | UPDATED SECTIONS |
|--------------------|-----------------------|----------------|------------------|
| First edition | MAN_512EVO_V1_EN_V1.0 | 12/2023 | - |
| | | | |
| | | | |
| | | | |
| | | | |



Table of contents

Preamble

Precautions

Your 512EVO charger

Specification

Installation

Switching on

Use

Diagnostics

Recovery mode

Vehicle start-up detection

New vehicle preparation (PDI)

Introduction

In the showroom

In the workshop

Updates

Optimus

Optimus installation

Using Optimus

Accessories and spare parts

Technical specifications

Warranty

Preamble

512EVO, A SINGLE CHARGER FOR ALL YOUR ACTIVITIES //////////////

The E-XTEQ 512EVO is a 50A charger for all 12V lead batteries. It is fully automatic and thanks to its integrated algorithms, no configuration or setting is required.

The 512EVO is a universal device with an intuitive text-free graphics interface, which means the various modes of use are simple and quick to understand.

It is intended for all garage activities:

- Preparation of new vehicles, with its optional printer and scanner;
- Maintenance of Showroom demonstration vehicles in operational condition;
- Taking care of all standard workshop tasks;
- Electronic control unit (ECU), to ensure voltage stability during an update.





Table of contents

Preamble

Precautions

Your 512EVO charger

Specification

Installation

Switching on

Use

Diagnostics

Recovery mode

Vehicle start-up detection

New vehicle preparation (PDI)

Introduction

In the showroom

In the workshop

Updates

Optimus

Optimus installation

Using Optimus

Accessories and spare parts

Technical specifications

Warranty

Precautions

GOOD PRACTICES AND SAFETY INSTRUCTIONS //////////////

Batteries should not be left unattended during charging.

Batteries contain chemicals. They may therefore produce explosive gases and can explode.

Batteries must be handled with care in a properly ventilated environment.

Batteries must not be placed near to flames or any other source of excessive heat. We recommend the use of PPE, such as safety glasses and gloves during handling.

The 512EVO charger contains magnets in order to fix it onto metallic surfaces. The safety strap (SWL: 80 kg) must be used to prevent any risk of the device accidentally falling.

The 512EVO charger should be positioned such that there is:

- Free access to the power supply cable and power switch
- Good ventilation of the device (periodically check that the ventilation holes are not obstructed)

These magnets must not be placed near to a person with a pacemaker.

These magnets may affect equipment such as credit cards, cell phones and other smartphones, tablets, USB sticks, SD cards, etc.

To avoid any disruption, we ask users to be aware of the meaning of the safety icons, shown in the box below.

The 512EVO charger should be used by those authorized to work with electronic car equipment and trained in the operating instructions and safety regulations thereof.



Equipment to be recycled.






|  WARNING | BATTERIES | MAGNETS |
|---|---|--|
| |  Wear safety goggles  Batteries produce explosive gases and can explode  Keep flames away from batteries |  • Risk of injury by crushing  • Hazards caused by magnetic fields  • Pacemakers  • Magnetic data carriers (Credit cards, SD-Memory Cards, etc.)  • Electric devices (Mobile phones, computers, displays, etc.)  • Fire danger  • Health hazards in contact with food and water |



Table of contents

Preamble

Precautions

Your 512EVO charger

Specification

Installation

Switching on

Use

Diagnostics

Recovery mode

Vehicle start-up detection

New vehicle preparation (PDI)

Introduction

In the showroom

In the workshop

Updates

Optimus

Optimus installation

Using Optimus

Accessories and spare parts

Technical specifications

Warranty

Your 512EVO charger

SPECIFICATION //////////////

Fully automatic / With the 512EVO, no user action is required other than connecting the device to the power supply and the clamps to the battery.

Robust and flexible, all in one / The 512EVO may be used in all areas of the garage and aftersales workshop. It charges and performs diagnostics for 12V batteries.

Simple to use / An intuitive, text-free graphics interface, displays all the results to the user. The 512EVO can therefore be used without any specific training or skills.

Safe / The 512EVO has several safety devices, including reverse polarity protection.

ANODIZED ALUMINUM BODY Guaranteed longevity





Table of contents

Preamble

Precautions

Your 512EVO charger

- Specification
- Installation
- Switching on
- Use
- Diagnostics
- Recovery mode
- Vehicle start-up detection

New vehicle preparation (PDI)

- Introduction

In the showroom

In the workshop

Updates

Optimus

- Optimus installation
- Using Optimus

Accessories and spare parts

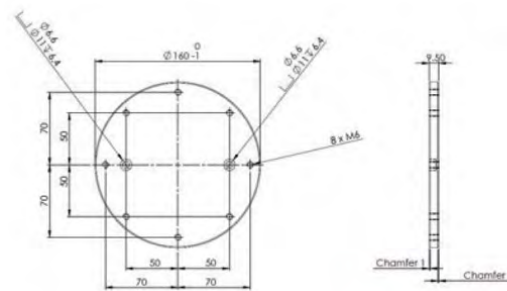
Technical specifications

Warranty

INSTALLATION //////////////

It is strongly recommended to hang the safety strap to a fixed support in your facility (hook or other), so as to avoid dropping the device, which could lead to irreparable damage to the device itself or damage to an object that it falls onto (bodywork for example). It may also be fixed using a padlock in order to prevent theft.

Below the dimensions to install the adapter plate:



Connect the power cable to connector CEI22 situated on the back of the device, then connect the other end to a standard electric socket. Connect the clip cables (on the front of the device) to the appropriate connector.



Once installed, the charge cable can be fixed with a hook (provided with the charger) to securely prevent cable from being accidentally removed.



SWITCHING ON //////////////

Switch on the device by setting the switch to position "I". The device starts up by displaying its software version, its serial number and the date and time successively.

When ready, the device can be connected via the camps to a battery. The "standby" mode is shown by a flashing battery icon, situated at the top left of the main screen.






- Status LEDs:
-  Charging
 -  Charge status
 -  Alarm



Table of contents

Preamble

Precautions

Your 512EVO charger

Specification
Installation
Switching on
Use
Diagnostics
Recovery mode
Vehicle start-up detection

New vehicle preparation (PDI)

Introduction

In the showroom

In the workshop

Updates

Optimus

Optimus installation
Using Optimus

Accessories and spare parts

Technical specifications

Warranty

USE // // // // //

When the clamps are connected, the charger displays the battery voltage while performing initial diagnostics.

The state of charge (SOC) is also displayed at the top right of the screen.

Please note that the voltage is only measured upon connection of the clamps: it's a fix value, not updated during the charge.



Three situations may occur:

- 1- The charger is correctly connected and the diagnostics satisfactory: 512EVO starts charging and the white LED flashes.
- 2 - There is a reverse polarity: the red LED flashes, the device BEEPs and the associated icon is displayed: the clamps should then be swapped so that the charger relaunches the diagnostics and begins charging.
- 3 - Diagnostics incomplete: the red LED flashes, the device BEEPs and the associated icon is displayed: the cycle is ended.

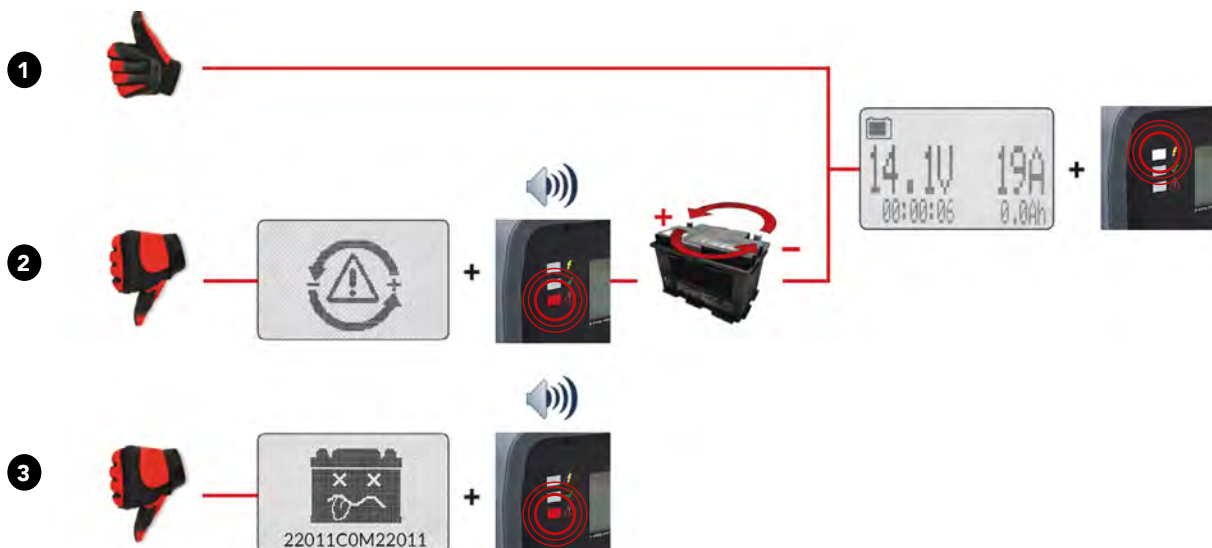




Table of contents

Preamble

Precautions

Your 512EVO charger

- Specification
- Installation
- Switching on
- Use
- Diagnostics
- Recovery mode
- Vehicle start-up detection

New vehicle preparation (PDI)

- Introduction

In the showroom

In the workshop

Updates

Optimus

- Optimus installation
- Using Optimus

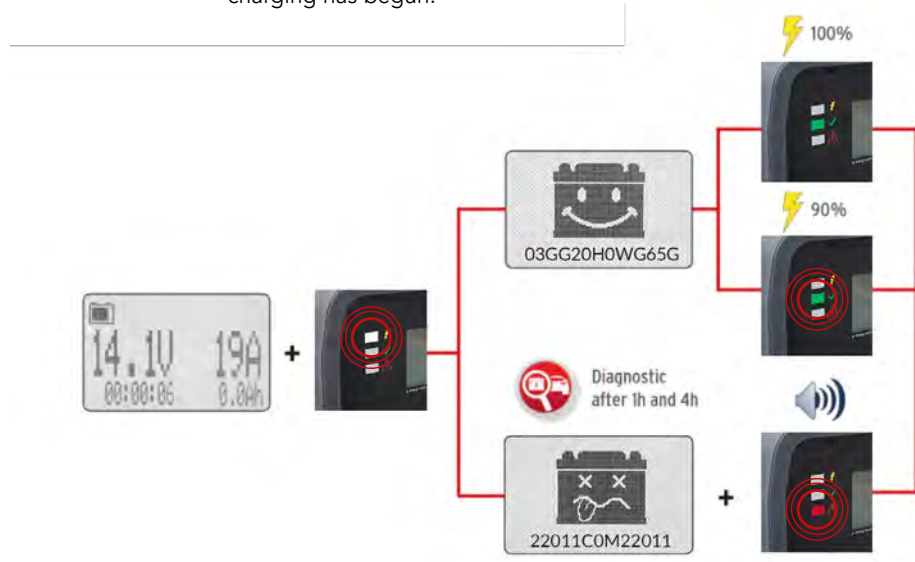
Accessories and spare parts

Technical specifications

Warranty

DIAGNOSTICS //////////////

During the cycle, the charger carries out several diagnoses using its internal algorithms. The first, upon connecting the clamps, can detect if a battery is in too poor a condition to be charged (short-circuit, etc.); the next, during the charging phase at 1 hour and 4 hours. This is why a battery can be declared poor, even after charging has begun.



RECOVERY MODE //////////////



In the case of a sulfated battery (generation of lead sulfate when charged for too long or too intensely, which reduces capacity and battery life), the charger may display the "good battery" icon although it is no longer able to accept additional charge, due to modification of its internal structure. If in doubt, use the recovery mode while leaving the charger connected for several hours.

In the case of a sulfated battery or a battery in poor condition, the 512EVO may attempt to recover it. The clamps should be connected and the charger left to carry out its cycles for several hours.

How do I know if recovery is working?

The charging current (on the right of the screen) increases, showing that desulfation has started and that the battery has begun to store current again.

VEHICLE START-UP DETECTION //////////////

The user may start the vehicle engine, even if the charger is in use. The charger will detect that the vehicle has started and it will stop charging, displaying the associated icon on the screen. It will then recommence charging when the engine is switched off again.





Table of contents

Preamble

Precautions

Your 512EVO charger

Specification

Installation

Switching on

Use

Diagnostics

Recovery mode

Vehicle start-up detection

New vehicle preparation (PDI)

Introduction

In the showroom

In the workshop

Updates

Optimus

Optimus installation

Using Optimus

Accessories and spare parts

Technical specifications

Warranty

New vehicle preparation (PDI)

INTRODUCTION //////////////

When preparing a new vehicle, the 512EVO device tests and charges the new vehicle battery before delivery to the customer. It ensures that the customer receives a vehicle equipped with a battery in perfect operating condition (correct and charged to the threshold required by the Manufacturer).

Once the required threshold achieved, the charger screen will display a battery icon with a code.

If the optional thermal printer is connected, at the end of the charge, the charge report with the code will be printed.





Table of contents

Preamble

Precautions

Your 512EVO charger

Specification

Installation

Switching on

Use

Diagnostics

Recovery mode

Vehicle start-up detection

New vehicle preparation (PDI)

Introduction

In the showroom

In the workshop

Updates

Optimus

Optimus installation

Using Optimus

Accessories and spare parts

Technical specifications

Warranty

In the showroom

INTRODUCTION //////////////

In a showroom, a vehicle may consume up to 50A.

When the battery is fully charged, the device automatically goes into "floating" mode to maintain a state of charge of 100%. The 512EVO can therefore remain permanently connected to the vehicle. It will automatically compensate the vehicle requirements up to 50A.

In "floating" mode, the main screen is off so as not to draw attention under the vehicle.

The rubbers situated on the corners of the device protect fragile surfaces on which it may be placed.

The compact size of the 512EVO enables it to be put in place without cluttering up the vehicle.

The integrated magnets also enable it to be placed directly on the chassis, making it practically invisible.



The special clamps for difficult access (ref. T1-0262-A) may be left in the vehicle with the hood down, so that the 512EVO charger may only be connected if required.





Table of contents

Preamble

Precautions

Your 512EVO charger

Specification

Installation

Switching on

Use

Diagnostics

Recovery mode

Vehicle start-up detection

New vehicle preparation (PDI)

Introduction

In the showroom

In the workshop

Updates

Optimus

Optimus installation

Using Optimus

Accessories and spare parts

Technical specifications

Warranty

In the workshop

INTRODUCTION //////////////

The 512EVO has been designed to meet all workshop requirements. Its patented ergonomics provide an installation that meets your needs as closely as possible and under the best operating conditions.

Update of the calculator (ECU):

Since September 2016, all calculator reprogramming has had to be carried out on chargers (note CLIP 161), thus ensuring that data is not lost.

The 512EVO is referenced for this type of action. It enables the consumption by the vehicle to be compensated and guarantees correct reprogramming of the calculator.



Diagnostics and charging:

When a customer asks for his/her vehicle to be examined, the mechanic can test the battery and charge it during the work. The device just needs to be connected when the vehicle arrives and thus it is done in a time-efficient manner while other actions are being carried out.





Table of contents

Preamble

Precautions

Your 512EVO charger

Specification

Installation

Switching on

Use

Diagnostics

Recovery mode

Vehicle start-up detection

New vehicle preparation (PDI)

Introduction

In the showroom

In the workshop

Updates

Optimus

Optimus installation

Using Optimus

Accessories and spare parts

Technical specifications

Warranty

Optimus

OPTIMUS INSTALLATION //////////////

512EVO V2 (grey rubber) includes an internal 4G memory capacity. All charging data (jobs) are stored and can be uploaded into to dedicated program: OPTIMUS.

If a new software update is released, OPTIMUS will update the 512EVO automatically upon connection.



Please note that OPTIMUS is not compatible with 512EVO V1 (blue rubber).

To download OPTIMUS, open a web page on the computer and go to the web site: <http://e-xteq.com>.

Click on the OPTIMUS tab.

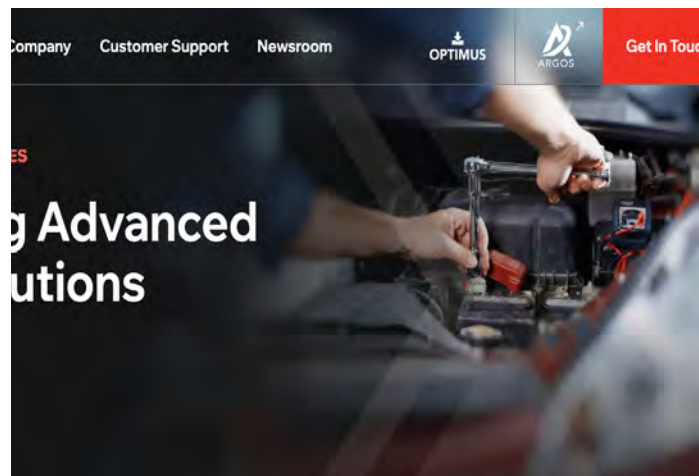




Table of contents

Preamble

Precautions

Your 512EVO charger

Specification

Installation

Switching on

Use

Diagnostics

Recovery mode

Vehicle start-up detection

New vehicle preparation (PDI)

Introduction

In the showroom

In the workshop

Updates

Optimus

Optimus installation

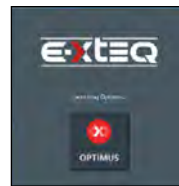
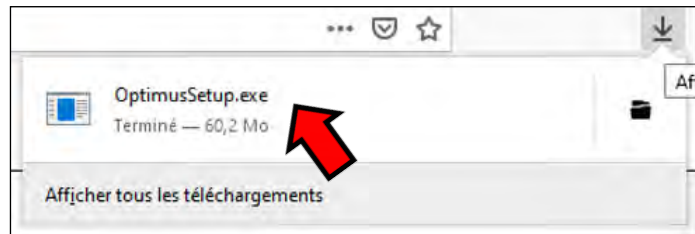
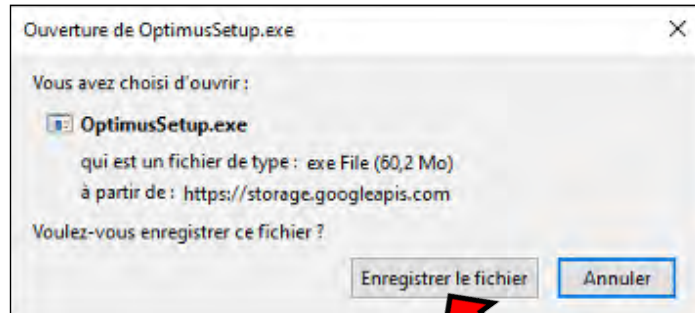
Using Optimus

Accessories and spare parts

Technical specifications

Warranty

Once the download is finished, you can save and open the executable file « OptimusSetup.exe ».



The first time you use OPTIMUS, you have to create an account. Click on " You don't have an account ".

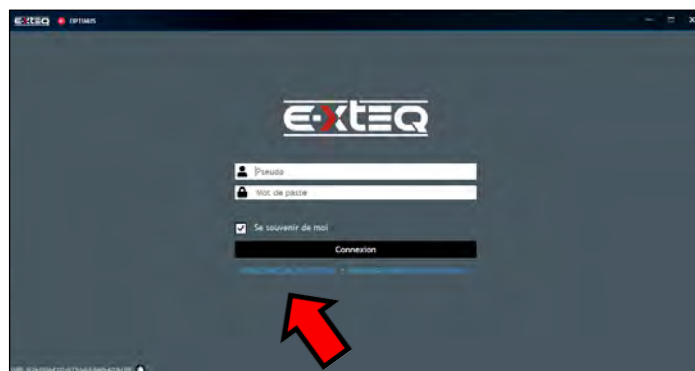




Table of contents

Preamble

Precautions

Your 512EVO charger

Specification

Installation

Switching on

Use

Diagnostics

Recovery mode

Vehicle start-up detection

New vehicle preparation (PDI)

Introduction

In the showroom

In the workshop

Updates

Optimus

Optimus installation

Using Optimus

Accessories and spare parts

Technical specifications

Warranty

Fill up all the empty fields, tick on "I'm not a robot" then "Register".

An internet page will open with your settings. Meanwhile, you will receive an e-mail to confirm your address.



It's very important to confirm your e-mail address by clicking on the link received (If the link isn't clickable from the mail body, display the view in a web browser).





Table of contents

Preamble

Precautions

Your 512EVO charger

- Specification
- Installation
- Switching on
- Use
- Diagnostics
- Recovery mode
- Vehicle start-up detection

New vehicle preparation (PDI)

- Introduction

In the showroom

In the workshop

Updates

Optimus

- Optimus installation
- Using Optimus

Accessories and spare parts

Technical specifications

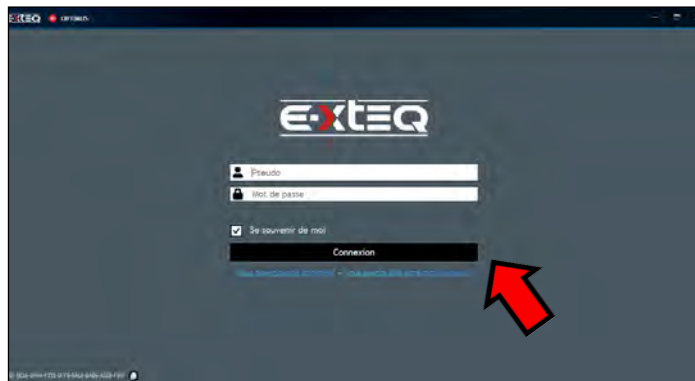
Warranty

The window below will corroborate that your email has been confirmed.



USING OPTIMUS // // // // //

You can now use OPTIMUS, using your credentials.



You will then have access to your dashboard.



When connecting your tool, it will appear in « Connected Devices ». All the recorded jobs files will be transferred automatically.





Table of contents

Preamble

Precautions

Your 512EVO charger

- Specification
- Installation
- Switching on
- Use
- Diagnostics
- Recovery mode
- Vehicle start-up detection

New vehicle preparation (PDI)

Introduction

In the showroom

In the workshop

Updates

Optimus

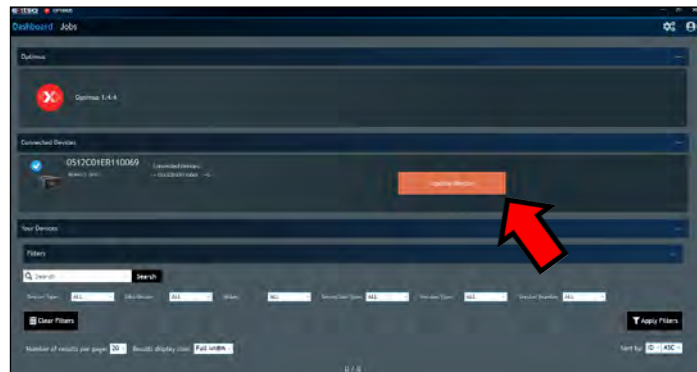
- Optimus installation
- Using Optimus

Accessories and spare parts

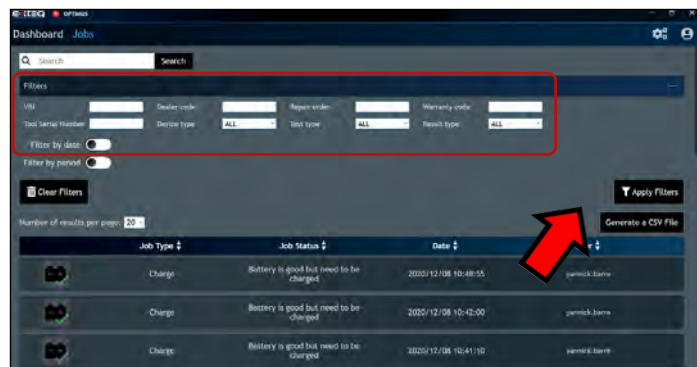
Technical specifications

Warranty

If a new software update is available, update will be proposed.



Jobs can be found under "JOBS" tab, they can be filtered and also exported in a CSV file.



Click on the job to see the detail. It is possible to generate a register a PDF file.

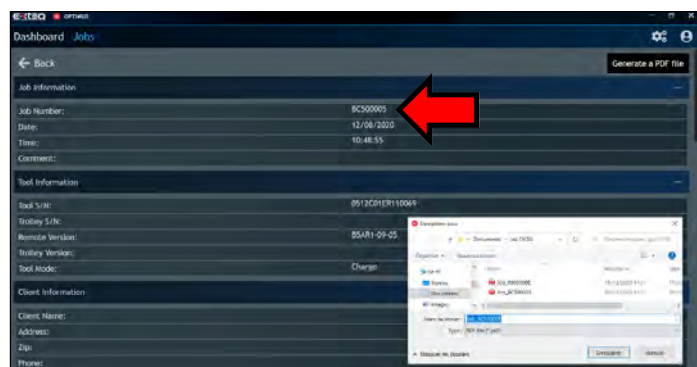




Table of contents

Preamble

Precautions

Your 512EVO charger

Specification

Installation

Switching on

Use

Diagnostics

Recovery mode

Vehicle start-up detection

New vehicle preparation (PDI)

Introduction

In the showroom

In the workshop

Updates

Optimus

Optimus installation

Using Optimus

Accessories and spare parts

Technical specifications

Warranty

Accessories and spare parts

UPDATE CABLE

REF.: T1-0124-A



Cable for connecting the diagnostics case, updating the software and connecting with CLIP.

3.5M CABLE WITH HEAVY DUTY CLAMPS

REF.: T1-0228-A



3.5m charge cable with heavy duty clamps.

3.5M CABLE DS TYPE

REF.: T1-0262-A



Charging Cable 3.5m DS Type (for difficult access).

**Table of contents****Preamble****Precautions****Your 512EVO charger**

Specification

Installation

Switching on

Use

Diagnostics

Recovery mode

Vehicle start-up detection

New vehicle preparation (PDI)

Introduction

In the showroom**In the workshop****Updates****Optimus**

Optimus installation

Using Optimus

Accessories and spare parts**Technical specifications****Warranty**

Technical specifications

512EVO, A SINGLE CHARGER FOR ALL YOUR ACTIVITIES //////////////

| | E-XTEQ 512EVO CHARGER |
|----------------------------|--|
| Power supply | 100 – 240 VAC 50/60 Hz (for worldwide networks) |
| Consumption | 800W – Less than 10A (115V) / 5A (230V) |
| Maximum current | 50 A of battery charge |
| Standing Wave Ratio | 150mV peak to peak |
| Power factor | 97% P.F.C. |
| Dimensions (mm) | 268 x 120 x 345 (overall) |
| Weight (kg) | 6kg (excluding cables) |
| Display | LCD 4 lines 60mm x 32mm |
| Protection index | IP22 |
| Sound level | 65dB at 50A |
| Temperatures | |
| Use | -15°C to +40°C |
| Storage | -30°C to +60°C |
| Relative humidity | 20 to 80% without condensation |



Table of contents

Preamble

Precautions

Your 512EVO charger

Specification

Installation

Switching on

Use

Diagnostics

Recovery mode

Vehicle start-up detection

New vehicle preparation (PDI)

Introduction

In the showroom

In the workshop

Updates

Optimus

Optimus installation

Using Optimus

Accessories and spare parts

Technical specifications

Warranty

Warranty

YOUR 512EVO IS GUARANTEED BY E-XTEQ //

Warranty

****For specific customers warranty questions, please contact us directly.****

Limited Warranty

E-XTEQ LLC products are warranted to be free of defects in materials, manufacturing, and workmanship for a period of one (1) year from date of purchase. This limited warranty applies to E-XTEQ products only and does not cover any other equipment. This limited warranty DOES NOT COVER static damage, misuse or abuse, normal wear and tear, water damage, overvoltage damage, dropping the unit, causing damage to it. E-XTEQ is not responsible nor liable for any incidental or consequential damage and will be subject to warranty voidability.

The warranty is also void if the client or any person outside E-XTEQ members facilities tries to disassemble the unit or to modify any of the parts or the cable assembly.

CLIENT and the Client Parties further acknowledge and agree that the total liability for any loss, physical damage, or theft while at any location other than the certified E-XTEQ Repair Locations is subject to warranty void and falls on the client.

E-XTEQ shall not be liable for any delays or damages caused by forces outside their control such as work stoppages, weather, shipping delays, acts of terrorism, war, strikes, catastrophes, or acts of God. This Warranty and any dispute between the parties will be construed under the laws of the State of Michigan without regard to conflicts of laws principles.

*Before sending a unit back for repair, an RMA (Return Materials Authorization) number must be obtained by contacting E-XTEQ Technical Support (see last page for reference).

E-XTEQ will ascertain if the unit needs to come in for repair or replacement. If the unit must be replaced, E-XTEQ will provide full instructions for the end user to receive the replacement parts in the shortest delay.

What is covered and for how long?

All accessories are backed by 1-Year Warranty for manufacturer defects only.

All accessories with a 1-Year Warranty are listed below.

Please read "How to obtain warranty" instructions to receive the correct parts and prevent any charges.



Table of contents

Preamble

Precautions

Your 512EVO charger

Specification

Installation

Switching on

Use

Diagnostics

Recovery mode

Vehicle start-up detection

New vehicle preparation (PDI)

Introduction

In the showroom

In the workshop

Updates

Optimus

Optimus installation

Using Optimus

Accessories and spare parts

Technical specifications

Warranty

ACCESSORIES:

-AC Power Cord

-Charge Cable with Clamps Remote Clamps

-Printer

-USB Cable

“E-XTEQ LLC” warrants to the original consumer purchaser that the product identified is free from defects in material and workmanship under normal use and service for the warranty period. This limited warranty does not extend to resellers, to used products that are resold. The warranty period commences upon the date of delivery to the original consumer purchaser and continuing for the following specified period after that date.

What is not covered?

This Standard Limited Warranty is conditioned upon proper use of the product. This Standard Limited Warranty does not cover:

- Defects or damage caused by accident, misuse, abnormal use, abnormal conditions, improper storage, neglect, or unusual physical, electrical, or electromechanical stress.
- Defects or damage caused by exposure to liquid, moisture, dampness, weather conditions, sand, dust, or dirt that is inconsistent with the specifications and instructions applicable to the product according to the user manual and the applicable terms and conditions.
- Scratches, dents, and cosmetic damage.
- Defects or damage caused by pressing on a touch screen with excessive force or with an object for use on the product’s touch screen.
- Equipment that has the serial number or the enhancement data code removed, defaced, damaged, altered, or made illegible.
- Ordinary wear and tear.
- Defects or damage caused using accessories, products, or ancillary/peripheral equipment not furnished or approved by E-XTEQ.
- Defects or damage caused by improper testing, operation, maintenance, software, installation, repair service or parts, or adjustment not furnished or approved by E-XTEQ.
- Defects or damage resulting from external causes such as collision with an object, fire, flooding, windstorm, lightning, earthquake, theft, acts of terrorism, war, strikes, catastrophes, improper use of any electrical source, or acts of God.

Warranty does not cover any product if:

- a. The use of a third-party which does not meet E-XTEQ specifications or has not been specifically approved.
- b. Tampering, as evidenced by, for example, a broken seal or seals.
- c. The product was subjected to external forces beyond normal use; or
- d. Product repair not furnished or approved by E-XTEQ.



Table of contents

Preamble

Precautions

Your 512EVO charger

Specification

Installation

Switching on

Use

Diagnostics

Recovery mode

Vehicle start-up detection

New vehicle preparation (PDI)

Introduction

In the showroom

In the workshop

Updates

Optimus

Optimus installation

Using Optimus

Accessories and spare parts

Technical specifications

Warranty

If the product has any non-warranted damage, after-market modifications or out-of-specification, or non-approved parts that impair E-XTEQ's ability to evaluate whether damage or defects are covered by the warranty or E-XTEQ ability to make an in-warranty repair (e.g., a cracked screen that must first be removed), then E-XTEQ will notify you and you will have the following options:

- You may have E-XTEQ return the product to you at your cost and, at your option, resubmit the product for warranty evaluation of in-warranty repair after the impairing condition has been repaired, corrected, or reversed; or replaced.

- You may have E-XTEQ repair, correct, or reverse the impairing condition at your cost, prior to E-XTEQ's provision of such warranty evaluation or in-warranty repair.

E-XTEQ will not make any warranty determinations or repairs until the impairing condition has been repaired, corrected, or reversed. Under no circumstances will E-XTEQ be obligated to maintain, restore, or repair any after-market changes to the Product's hardware.

What is E-XTEQ's obligations?

During the applicable warranty period, provided the Product is returned to E-XTEQ in accordance with the terms of this Standard Limited Warranty and exhibits an in-warranty defect, E-XTEQ will, at E-XTEQ's sole option, either repair the in-warranty defect without charge, subject to the conditions above or replace the product without charge. E-XTEQ may, at E-XTEQ's sole option, use rebuilt, reconditioned, or new parts or components when repairing any product, or may replace the product with a rebuilt, reconditioned, or new product. All repaired/replaced products will be covered by the terms of E-XTEQ Standard Limited Warranty for a period equal to the remainder of the original Standard Limited Warranty on the original product or for ninety (90) days, whichever is longer.

All replaced products, parts, components, boards, and equipment shall become the property of E-XTEQ. Except to any extent required by applicable law, transfer or assignment of this Standard Limited Warranty is prohibited.

During the applicable warranty period, provided the product is returned in accordance with the terms of this Standard Limited Warranty, E-XTEQ will repair or replace the Product, at E-XTEQ's sole option, without charge. E-XTEQ will, at E-XTEQ's sole option, either repair the in-warranty defect without charge, subject to the conditions above or replace the product without charge. E-XTEQ may, at E-XTEQ's sole option, use rebuilt, reconditioned, or new parts or components when repairing any product, or may replace the product with a rebuilt, reconditioned, or new product.



Table of contents

Preamble

Precautions

Your 512EVO charger

Specification

Installation

Switching on

Use

Diagnostics

Recovery mode

Vehicle start-up detection

New vehicle preparation (PDI)

Introduction

In the showroom

In the workshop

Updates

Optimus

Optimus installation

Using Optimus

Accessories and spare parts

Technical specifications

Warranty

What must you do to obtain warranty service?

To obtain service under this Standard Limited Warranty, you must call E-XTEQ Customer Support department, and provide the information needed by the support team. Once the information provided by the customer is confirmed, the support team will provide different service options.

Before sending a unit back for repair, an RMA (Return Materials Authorization) number must be obtained by E-XTEQ Technical Support. Devices/tools must be shipped for repair with the RMA number provided by E-XTEQ support team, or accompanied by, the sales receipt or comparable proof of purchase showing the original date of purchase by the original consumer purchaser, the serial number of the Product, and the seller's name and address. If E-XTEQ determines that any Product is not covered by this Standard Limited Warranty, you must pay all parts, shipping, and labor charges for the repair or return of such Product.

What are the limits on E-XTEQ's liability?

This standard limited warranty sets out the full extent of E-XTEQ's responsibilities and the exclusive remedy regarding the products. All implied warranties, including without limitation, implied warranties of merchantability and fitness for a particular purpose, are limited to the duration of this limited warranty. In no event shall E-XTEQ be liable for damages more than the purchase price of the product or for, without limitation, commercial loss of any sort; loss of use, time, reputation, opportunity, goodwill, profits or savings; inconvenience; loss, corruption, or disclosure of data or information that occurs during the warranty process; incidental, special, consequential or punitive damages; or damages arising from the use or inability to use the product. Some states and jurisdictions do not allow limitations on how long an implied warranty lasts, or the disclaimer or limitation of incidental or consequential damages, so the above limitations and disclaimers may not apply to you.

E-XTEQ makes no warranties or representations, express or implied, statutory or otherwise, as to the quality, capabilities, operations, performance or suitability of any third-party software or equipment used in conjunction with the product, or the ability to integrate any such software or equipment with the product, whether such third-party software or equipment is included with the product distributed by E-XTEQ or otherwise. Responsibility for the quality, capabilities, operations, performance, and suitability of any such third-party software or equipment rests solely with the user and the direct vendor, owner or supplier of such third-party software or equipment.

**Table of contents****Preamble****Precautions****Your 512EVO charger**

Specification

Installation

Switching on

Use

Diagnostics

Recovery mode

Vehicle start-up detection

New vehicle preparation (PDI)

Introduction

In the showroom**In the workshop****Updates****Optimus**

Optimus installation

Using Optimus

Accessories and spare parts**Technical specifications****Warranty**

Nothing contained in the user manual, or any other document shall be construed to create an express warranty of any kind with respect to the product. No agent, employee, dealer, representative or reseller is authorized to modify or extend this standard limited warranty or to make binding representations or claims, whether in advertising, presentations or otherwise, on behalf of E-XTEQ regarding the products or this standard limited warranty.

Severability

If any portion of this Standard Limited Warranty is held to be illegal or unenforceable, such partial illegality or unenforceability shall not affect the enforceability of the remainder of the Standard Limited Warranty.

You may not reproduce any content in whole or in part without E-XTEQ's prior written approval, except for your own personal use.

North America:

E-XTEQ

Technical Support

1-877-453-3265

support.usa@e-xteq.comwww.e-xteq.com**EMEA:**

E-XTEQ

Technical Support

+33 1 30 07 13 30

support.eu@e-xteq.comwww.e-xteq.com



Detroit, Mexico, Sao Paõlo, Paris, Nagoya, Shanghai, Taiwan.

www.e-xteq.com

© Copyright E-XTEQ 2023
Oficina central : 30 Rue des Dames,
78340 Les Clayes-sous-Bois,
FRANCE

7610 Market Rd. - Canton, MI 48187
USA

Any reproduction of this document in any form whatsoever
will be subject to prosecution.