



1012EVO USER MANUAL

MANUEL / Reference : MAN_1012EVO_E-XTEQ_EN_V1.0





Table of Content

- Introduction**
- Safety Guidelines**
- Maintenance and Storage
- Before Use
- Usage Precautions
- Disassembly/Damage/Removal
- Cleaning the Product
- Getting Started**
- Safety Reminders
- Appearance and Dimensions
- Accessories
- Setup**
- Specifications
- Operations**
- Normal Charge
- Fast Charge
- ECU Reflash
- History
- Optimus**
- Optimus Installation
- Using Optimus
- Support Information**
- Warranty**

Table of Contents

E-XTEQ 1012EVO USER MANUAL

- Introduction** 3
- Safety Guidelines**..... 4
- Maintenance and Storage 4
- Before Use 4
- Usage Precautions..... 5
- Disassembly/Damage/Removal..... 5
- Cleaning the Product 5
- Getting Started** 6
- Safety Reminders..... 6
- Appearance and Dimensions..... 6
- Accessories 7
- Setup** 8
- Specifications..... 8
- Operations**..... 9
- Normal Charge 9
- Fast Charge..... 10
- ECU Reflash..... 11
- History..... 12
- Optimus** 14
- Optimus Installation 14
- Using Optimus..... 17
- Support Information 19
- Warranty** 20
- Limited Warranty 20
- How to Obtain Warranty 20

Revision of the manual

Due to software updates, your experience of the software interface (including but not limited to software features, user interfaces, and interaction experiences) may differ from the interface presented in this manual. The software interface is subject to change.

EDITION / REVISION	REFERENCE	DATE	UPDATES PARTS
First edition	MAN_1012EVO_EXTEQ_EN_V1.0	May 2023	-

**Table of Content****Introduction****Safety Guidelines**

Maintenance and Storage
Before Use
Usage Precautions
Disassembly/Damage/Removal
Cleaning the Product

Getting Started

Safety Reminders
Appearance and Dimensions
Accessories

Setup

Specifications

Operations

Normal Charge
Fast Charge
ECU Reflash
History

Optimus

Optimus Installation
Using Optimus

Support Information**Warranty**

Introduction

ABOUT //////////////

E-XTEQ designs, develops, manufactures, and distributes trailblazing 12V and EV diagnostic battery equipment, handheld testers, chargers/dischargers, maintainers, balancers and leak testers to OEM and aftermarket professionals worldwide.

With over 30 years of experience in the aviation industry, E-XTEQ engineers and technicians have the technical knowledge and expertise to create the equipment solution to match your specific project requirements.

Our team will be available to support you throughout all phases of the implementation cycle; from design through production, as well as providing training and local service and maintenance.

Headquartered in France, E-XTEQ has a physical presence in 27 countries, regional subsidiaries in the U.S.A, Japan, Brazil, and China along with three manufacturing sites located in China, Taiwan, and Mexico.

E-XTEQ, with 108 repair locations, provides Level-10 customer service globally, offering our customers rapid turnaround time.

Our mission is to be a passionate global leader of innovative measurement solutions by providing premium testing equipment and unsurpassed services to our valued customers and partners.

1012EVO has a built-in 12V/100A charger/maintainer that provides in-depth features and functions to stabilize battery voltage during ECU reflash and is capable of charging different battery chemistries.



- Table of Content
- Introduction
- Safety Guidelines**
- Maintenance and Storage
- Before Use
- Usage Precautions
- Disassembly/Damage/Removal
- Cleaning the Product
- Getting Started**
- Safety Reminders
- Appearance and Dimensions
- Accessories
- Setup**
- Specifications
- Operations**
- Normal Charge
- Fast Charge
- ECU Reflash
- History
- Optimus**
- Optimus Installation
- Using Optimus
- Support Information**
- Warranty

Safety Guidelines 1/2

Please read the safety guidelines carefully.

This section indicates the areas that need to be protected in order to prevent harm to people who use this equipment, damage to property and to enable proper use of this product.

MAINTENANCE AND STORAGE //////////////

Keep this product dry. Do not expose the 1012EVO to rain or snow.

Discontinue use and contact technical support if an overheat event has occurred, or if corrosion or deterioration has been identified in the cables or other parts of the product.

BEFORE USE //////////////



Keep the exterior clean and free of dust.
Do not disassemble or modify the main unit as it may cause an electrical shortage or fire.
To reduce the risk of electrical shortage, unplug the AC power plug before cleaning and maintenance.

Extreme caution: Keep liquids and conductive tools away from the 1012EVO while operating.

1012EVO must be used in a well-ventilated area.

When operating the equipment make sure the surface is dry and clean to minimize any risks.



The battery contains chemicals that may generate explosive gases. Before handling the battery, remove all metal accessories such as rings, bracelets and necklaces. Short circuit at battery terminals may cause burns. Do not place batteries near flames or other heat sources



The battery fluid is highly corrosive. If the battery fluid gets on your skin or clothes, immediately wash it with soap and water. If electrolyte gets in your eyes, immediately flush with cold water for at least 10 minutes and seek medical attention.

Table of Content**Introduction****Safety Guidelines**

Maintenance and Storage

Before Use

Usage Precautions

Disassembly/Damage/Removal

Cleaning the Product

Getting Started

Safety Reminders

Appearance and Dimensions

Accessories

Setup

Specifications

Operations

Normal Charge

Fast Charge

ECU Reflash

History

Optimus

Optimus Installation

Using Optimus

Support Information**Warranty**

Safety Guidelines 2/2

SAFETY REMINDERS //////////////

Do not use extension cords as there is a risk of fire and electrical shortage.

If use is necessary, check that the extension cord has the following:

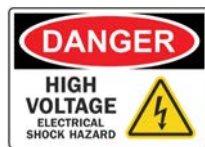
1. Identical plug, cable size and the same electrical wiring as the 1012EVO.
2. Make sure the equipment is securely connected before use.

When unplugging the cord from the outlet, hold the frame of the plug to avoid damaging the plug or power cord. Pulling the cord may cause the cable plug to break. Replace power cord immediately if damaged.

If the outlet shape does not fit the plug, please contact the E-XTEQ service department.

Phone: 1.877.453.3265

E-mail: supportusa@e-xteq.com



*Do not touch the power connector during use.
Keep away and Do Not Touch restricted areas
of this equipment.*

SAFETY REMINDERS //////////////

Do not disassemble the product or damage or remove the stickers or labels on the product. If the product's case has been disassembled or damaged by the user, all warranties will be void. Always contact a designated E-XTEQ Service Center for repairs.

Do not insert metallic objects into the unit to prevent electric shock, fire, short circuit, possible leaking of harmful substances and personal injuries. Do not store the product in a wet or humid place. Always store the product in a dry place.

SAFETY REMINDERS //////////////

It is recommended that you clean the product by wiping it gently using a soft cloth. Do not use water, chemical substances or detergents. They may cause discoloration or corrosion to the product's exterior and may cause a fire or electric shock.



Table of Content

Introduction

Safety Guidelines

- Maintenance and Storage
- Before Use
- Usage Precautions
- Disassembly/Damage/Removal
- Cleaning the Product

Getting Started

Safety Reminders

Appearance and Dimensions

Accessories

Setup

Specifications

Operations

Normal Charge

Fast Charge

ECU Reflash

History

Optimus

Optimus Installation

Using Optimus

Support Information

Warranty

Getting Started 1/2

SAFETY REMINDERS //////////////

Please review the safety guidelines in this manual before using the 1012EVO for safety operations

When unplugging the 1012EVO, pull on the plug frame rather than the cord to reduce the risk of damaging the power plug or cord.

The 1012EVO is designed for indoor use. Use outside in dry weather only.

APPEARANCE AND DIMENSIONS //////////////

Dimension Details:

Metrics: 234.95 W x 342.9 L x 120.65 H (mm)
Imperial: 9.25 W x 13.5 L x 4.75 H (inch)

Weight:

Kilogram: 5.66 (kg)
Pounds: 12.5 (lbs.)





- Table of Content**
- Introduction**
- Safety Guidelines**
- Maintenance and Storage
- Before Use
- Usage Precautions
- Disassembly/Damage/Removal
- Cleaning the Product
- Getting Started**
- Safety Reminders
- Appearance and Dimensions
- Accessories**
- Setup**
- Specifications
- Operations**
- Normal Charge
- Fast Charge
- ECU Reflash
- History
- Optimus**
- Optimus Installation
- Using Optimus
- Support Information**
- Warranty**

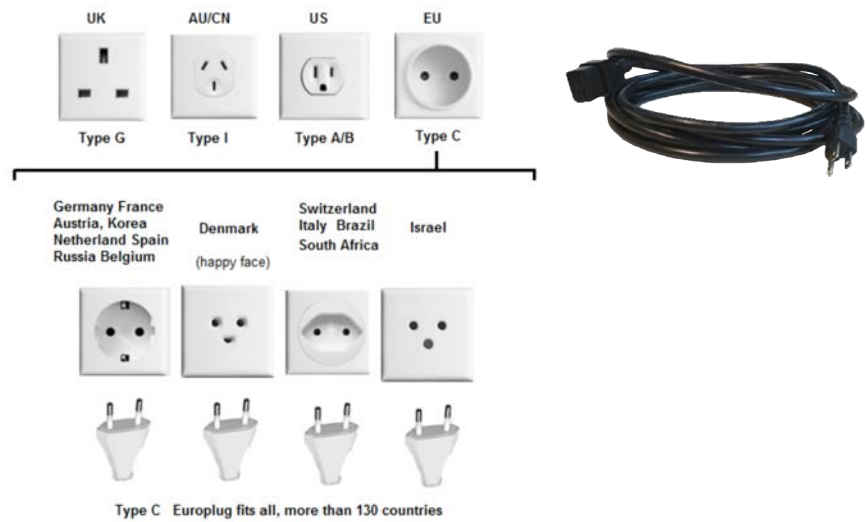
Getting Started 2/2

ACCESSORIES //////////////

Power Cord

16.4 ft/5m power cord is supplied with the Stellantis 1012EVO.

The cord will be suitable based on the destination country standards



Charge Cable with Clamp

The cable will be used to connect the battery to the 1012EVO for charging.



Accessories Box

1. 3 Anti-scratching mounting magnets with rubber coating





Table of Content

Introduction

Safety Guidelines

- Maintenance and Storage
- Before Use
- Usage Precautions
- Disassembly/Damage/Removal
- Cleaning the Product

Getting Started

- Safety Reminders
- Appearance and Dimensions
- Accessories

Setup

Specifications

Operations

- Normal Charge
- Fast Charge
- ECU Reflash
- History

Optimus

- Optimus Installation
- Using Optimus

Support Information

Warranty

Setup 1/1

SPECIFICATIONS //////////////



Table of Content**Introduction****Safety Guidelines**

Maintenance and Storage

Before Use

Usage Precautions

Disassembly/Damage/Removal

Cleaning the Product

Getting Started

Safety Reminders

Appearance and Dimensions

Accessories

Setup

Specifications

Operations**Normal Charge**

Fast Charge

History

History

Optimus

Optimus Installation

Using Optimus

Support Information

Warranty

Operations 1/5

NORMAL CHARGE // // // // //**BC1012 NORMAL CHARGE QUICKGUIDE****1 MAIN MENU**

The Main Menu has three icons. Charge, History and Settings. Select the Charge Icon to Proceed

**2 SELECTING CHARGE MODE**

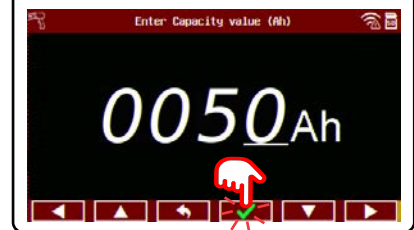
To start a CHARGE, touch the normal charge icon.

**3 SELECT CHARGING VOLTAGE**

Select Battery Chemistry

**4 SELECT CHARGING CURRENT**

Use the arrows to select the battery CCA Value. Press Y to confirm.

**5 SELECT CONNECTION TYPE**

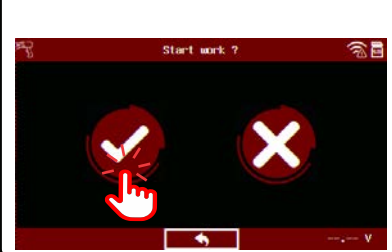
Select the type of connection. Through the battery terminals or jump start post.

**6 LOCATION**

Select location of the battery.

**7 START WORK**

Select to start work.

**8 CONNECT THE CLAMPS**

Make sure the clamps are connected.

**9 WARNING**

The Warning Screen will show a couple warnings before proceeding.

**10 START WORK**

Press to start.





- Table of Content**
- Introduction**
- Safety Guidelines**
- Maintenance and Storage
- Before Use
- Usage Precautions
- Disassembly/Damage/Removal
- Cleaning the Product
- Getting Started**
- Safety Reminders
- Appearance and Dimensions
- Accessories
- Setup**
- Specifications
- Operations**
- Normal Charge
- Fast Charge
- ECU Reflash
- History
- Optimus**
- Optimus Installation
- Using Optimus
- Support Information**
- Warranty**

Operations 1/5

NORMAL CHARGE //////////////

BC1012 NORMAL CHARGE QUICKGUIDE

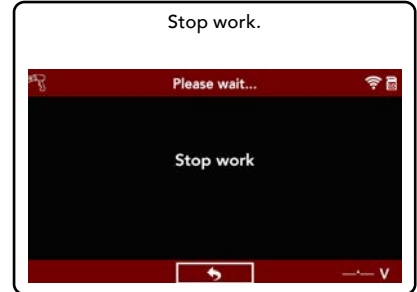
11 POWER SUPPLY

While charging, the screen will show these parameters.



12 STOP WORK

Stop work.



13 CHARGE RESULT

The charge screen will provide the results as seen below.



Table of Content**Introduction****Safety Guidelines**

Maintenance and Storage

Before Use

Usage Precautions

Disassembly/Damage/Removal

Cleaning the Product

Getting Started

Safety Reminders

Appearance and Dimensions

Accessories

Setup

Specifications

Operations

Normal Charge

Fast Charge

History

History

Optimus

Optimus Installation

Using Optimus

Support Information

Warranty

Operations 2/5

FAST CHARGE // // // //**BC1012 FAST CHARGE QUICKGUIDE****1 MAIN MENU**

The Main Menu has three icons. Charge, History and Settings. Select the Charge Icon to Proceed

**2 SELECTING CHARGE MODE**

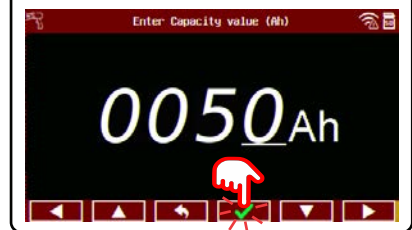
To start a CHARGE, touch the normal charge icon.

**3 SELECT CHARGING VOLTAGE**

Select Battery Chemistry

**4 SELECT CHARGING CURRENT**

Use the arrows to select the battery CCA Value. Press Y to confirm.

**5 SELECT CONNECTION TYPE**

Select the type of connection. Through the battery terminals or jump start post.

**6 LOCATION**

Select location of the battery.

**7 START WORK**

Select to start work.

**8 CONNECT THE CLAMPS**

Make sure the clamps are connected.

**9 WARNING**

The Warning Screen will show a couple warnings before proceeding.

**10 START WORK**

Press to start.



Table of Content**Introduction****Safety Guidelines**

Maintenance and Storage
Before Use
Usage Precautions
Disassembly/Damage/Removal
Cleaning the Product

Getting Started

Safety Reminders
Appearance and Dimensions
Accessories

Setup

Specifications

Operations**Normal Charge**

Fast Charge

ECU Reflash

History

Optimus

Optimus Installation

Using Optimus

Support Information**Warranty**

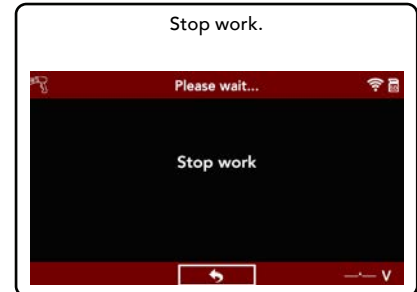
Operations 2/5

FAST CHARGE // // // // //**BC1012 FAST CHARGE QUICKGUIDE****11 POWER SUPPLY**

While charging, the screen will show these parameters.

**12 STOP WORK**

Stop work.

**13 CHARGE RESULT**

The charge screen will provide the results as seen below.



Table of Content**Introduction****Safety Guidelines**

Maintenance and Storage

Before Use

Usage Precautions

Disassembly/Damage/Removal

Cleaning the Product

Getting Started

Safety Reminders

Appearance and Dimensions

Accessories

Setup

Specifications

Operations**Normal Charge**

Fast Charge

ECU Reflash

History

Optimus

Optimus Installation

Using Optimus

Support Information

Warranty

Operations 3/5

ECU REFLASH // // // // //**BC1012 ECU REFLASH QUICKGUIDE****1 MAIN MENU**

The Main Menu has three icons. Charge, History and Settings. Select the Charge Icon to Proceed

**2 SELECTING ECU REFLASH**

To start ECU REFLASH touch the ECU icon.

**3 CONNECT THE CLAMPS**

Make sure the clamps are connected.

**4 WARNING**

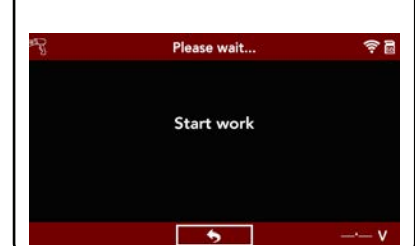
The Warning Screen will show a couple warnings before proceeding.

**5 PRESS TO START**

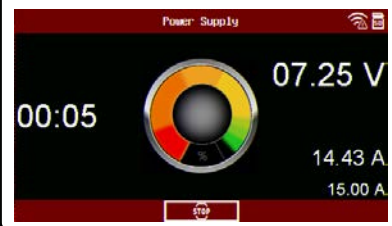
Select to start work.

**6 START WORK**

Press to start.

**7 POWER SUPPLY**

While charging, the screen will show these parameters.

**8 START WORK**

Press to start.

**9 MAIN MENU**

After stopping charge the screen will go back to the main menu.

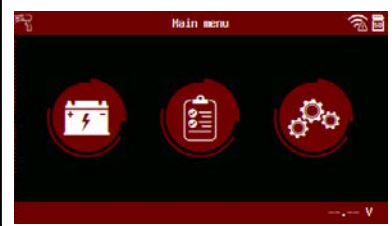


Table of Content

Introduction

Safety Guidelines

- Maintenance and Storage
- Before Use
- Usage Precautions
- Disassembly/Damage/Removal
- Cleaning the Product

Getting Started

- Safety Reminders
- Appearance and Dimensions
- Accessories

Setup

- Specifications

Operations

Normal Charge

- Fast Charge
- ECU Reflash
- History

Optimus

- Optimus Installation
- Using Optimus

Support Information

Warranty

Operations 4/5

HISTORY // // // // //

BC1012 HISTORY QUICKGUIDE

The History Icon in the Main Menu shows the records of previous tests performed with the Trolley and with the Remote.

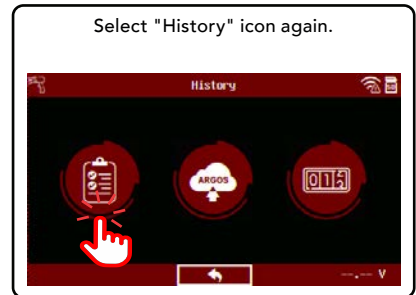
1 MAIN MENU

Go to the "History" icon.



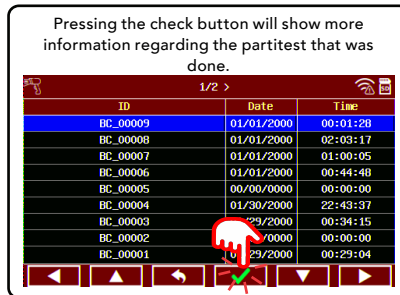
2 HISTORY ICON

Select "History" icon again.



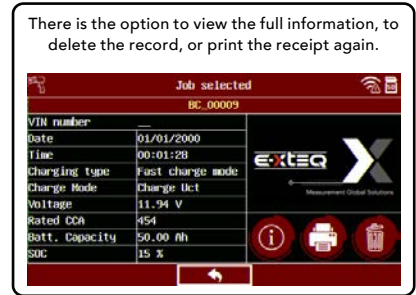
3 INFORMATION

Pressing the check button will show more information regarding the partitest that was done.



4 JOB SELECTED

There is the option to view the full information, to delete the record, or print the receipt again.



5 DETAILS SELECTED

Select the job you are interested in and press the "Detail" icon.



6 DETAILS

The details will be displayed.

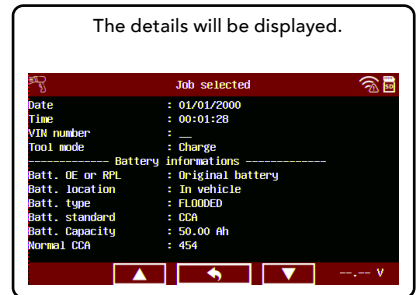




Table of Content

Introduction

Safety Guidelines

- Maintenance and Storage
- Before Use
- Usage Precautions
- Disassembly/Damage/Removal
- Cleaning the Product

Getting Started

- Safety Reminders
- Appearance and Dimensions
- Accessories

Setup

- Specifications

Operations

Normal Charge

- Fast Charge

- ECU Reflash

- History

Optimus

- Optimus Installation

- Using Optimus

Support Information

Warranty

Operations 5/5

HISTORY //////////////

BC1012 HISTORY QUICKGUIDE

All jobs can be automatically saved into OPTIMUS PC software via Wi-Fi connection (remote to network).



Pressing the check button on the "ARGOS" icon will transfer automatically all job on OPTIMUS PC Software.



If you are not connected to Wi-Fi (Remote to Network), there will be a message displayed. Please follow the steps indicated in the section "Wi-Fi Connection (Remote to Network)" in this manual.



Table of Content

Introduction

Safety Guidelines

- Maintenance and Storage
- Before Use
- Usage Precautions
- Disassembly/Damage/Removal
- Cleaning the Product

Getting Started

- Safety Reminders
- Appearance and Dimensions
- Accessories

Setup

- Specifications

Operations

- Normal Charge
- Fast Charge
- ECU Reflash
- History

Optimus

Optimus Installation

- Using Optimus

Support Information

Warranty

Optimus 1/5

OPTIMUS INSTALLATION //////////////

All charging data (jobs) performed by 1012EVO are stored and can also be uploaded into a dedicated program: OPTIMUS.

When a new software update is released, OPTIMUS will automatically propose to update the 1012EVO upon connection of its Remote via its dedicated USB cable.

If the Trolley needs to be updated, when connecting to it, Remote will display the following message "Please update the trolley with Optimus".

To download OPTIMUS, open a web page on the computer and go to the web site: <http://e-xteq.com>.

Click on the DOWNLOAD OPTIMUS icon.





Table of Content

Introduction

Safety Guidelines

- Maintenance and Storage
- Before Use
- Usage Precautions
- Disassembly/Damage/Removal
- Cleaning the Product

Getting Started

- Safety Reminders
- Appearance and Dimensions
- Accessories

Setup

- Specifications

Operations

- Normal Charge
- Fast Charge
- ECU Reflash
- History

Optimus

Optimus Installation

- Using Optimus

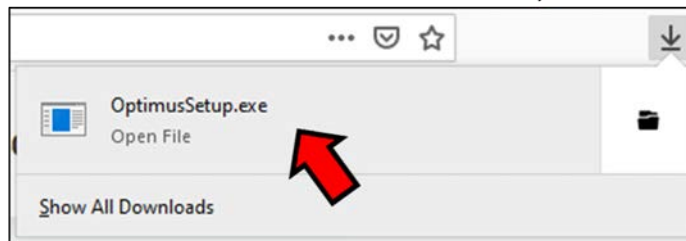
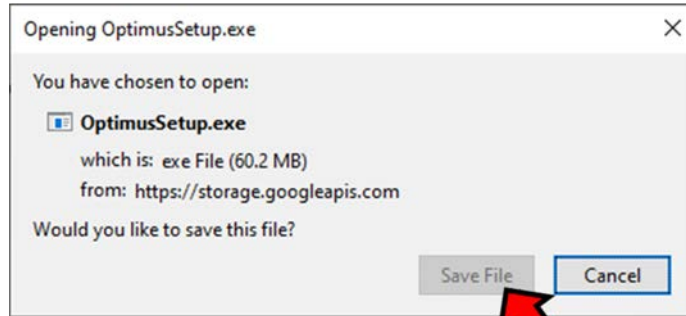
Support Information

Warranty

Optimus 2/5

OPTIMUS INSTALLATION //////////////

Open the download is finished, you can save and open the executable file "OptimusSetup.exe".



The first time you even open OPTIMUS, you have to create an account. Click on "Don't have an account yet?" link.

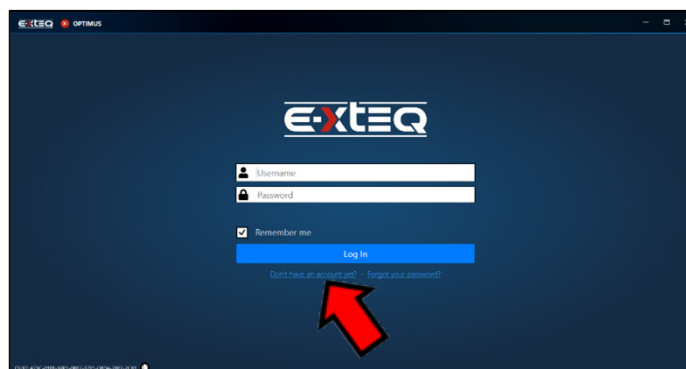


Table of Content**Introduction****Safety Guidelines**

Maintenance and Storage

Before Use

Usage Precautions

Disassembly/Damage/Removal

Cleaning the Product

Getting Started

Safety Reminders

Appearance and Dimensions

Accessories

Setup

Specifications

Operations

Normal Charge

Fast Charge

ECU Reflash

History

Optimus**Optimus Installation**

Using Optimus

Support Information**Warranty**

Optimus 3/5

OPTIMUS INSTALLATION //

Fill up all the empty fields, check the "I'm not a robot" box and then click "Register"

E-XTEQ Identity

Register.
Create a new account.

Username

Email

Password

Confirm Password

I'm not a robot

Register

E-XTEQ Identity © 2014 Language

An internet page will open with your settings. Meanwhile, you will receive an email to confirm your email address.

E-XTEQ Identity

E-XTEQ
E-XTEQ Identity
Welcome to your E-XTEQ Identity page

Personal Grants
Discovery Document
My profile

My personal data
Two factor authentication
Change password



It is very important to confirm your email address by clicking on the link received. (If the link isn't clickable from the mail body, display the email in a web browser.)

E-XTEQ

HELLO yannick_support.
Your registration is being processed.

JUST ONE MORE STEP PLEASE

Confirm your email

Best regards,

E-XTEQ Identity

Confirm email

Thank you for confirming your email.

E-XTEQ Identity © 2014 Language



Table of Content

Introduction

Safety Guidelines

- Maintenance and Storage
- Before Use
- Usage Precautions
- Disassembly/Damage/Removal
- Cleaning the Product

Getting Started

- Safety Reminders
- Appearance and Dimensions
- Accessories

Setup

- Specifications

Operations

- Normal Charge
- Fast Charge
- ECU Reflash
- History

Optimus

- Optimus Installation
- Using Optimus

Support Information

Warranty

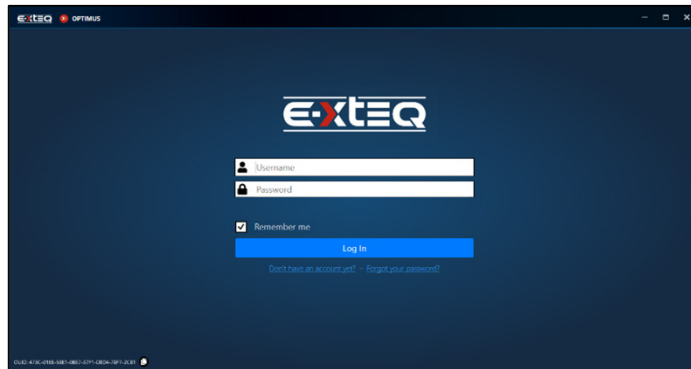
Optimus 5/5

USING OPTIMUS // // // // //

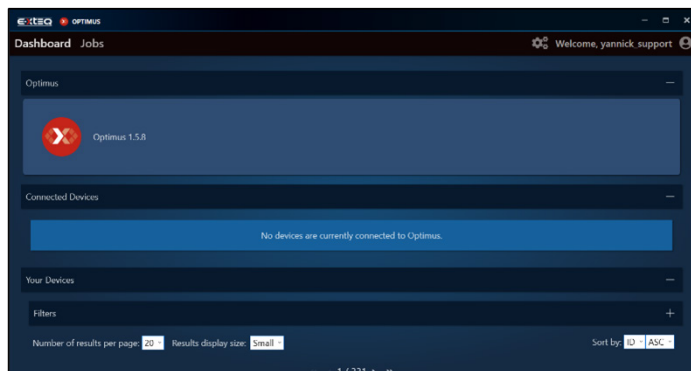


Depending on the configuration of your computer installation, it may be necessary to create an authorization to ARGOS IP Address: 35.204.186.65.

You can now use OPTIMUS, using your credentials.



You will then have access to your dashboard.



When connecting your tool, it will appear in "Connected Devices". All the recorded job files will be transferred automatically.



Clicking on the image of the product will give you access to the tools Dashboard.

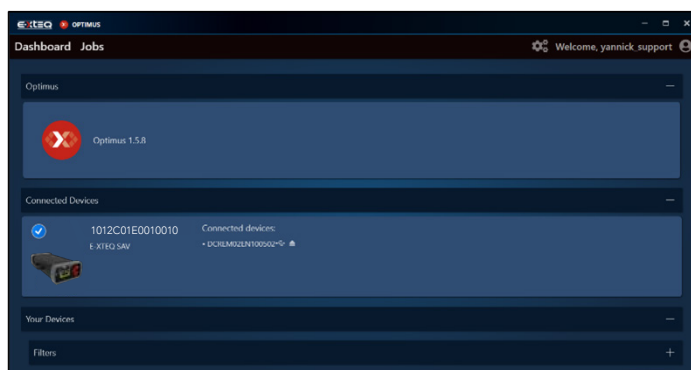




Table of Content

Introduction

Safety Guidelines

Maintenance and Storage

Before Use

Usage Precautions

Disassembly/Damage/Removal

Cleaning the Product

Getting Started

Safety Reminders

Appearance and Dimensions

Accessories

Setup

Specifications

Operations

Normal Charge

Fast Charge

ECU Reflash

History

Optimus

Optimus Installation

Using Optimus

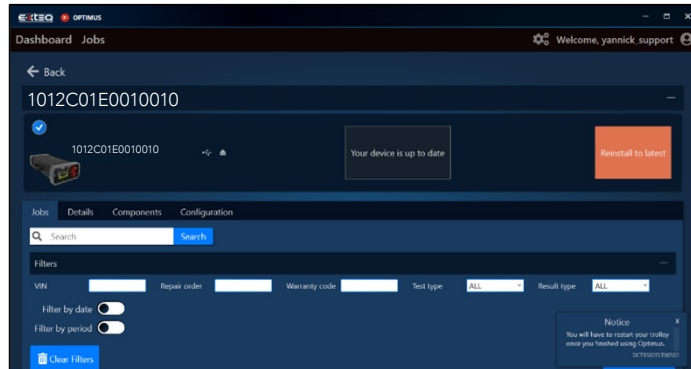
Support Information

Warranty

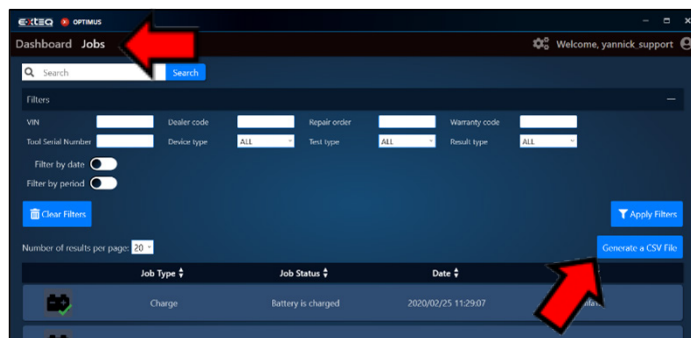
Optimus 5/5

USING OPTIMUS // // // // //

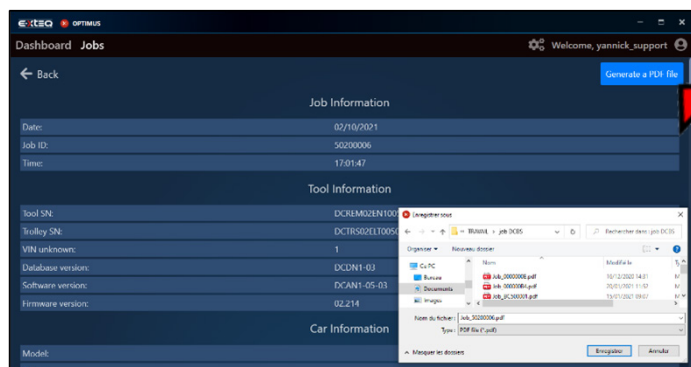
If a new software update is available, this update will be proposed. If the latest version is already installed, "Your device is up to date" will be shown.



Jobs can be found under the "JOBS" tab. They can be filtered and also exported into a CSV file.



"Apply Filter" will show a list of jobs. Click on the job to see the detail. It is possible to generate and download a PDF file of the job.



When you want to leave OPTIMUS, please click the eject button to safely eject the USB that is connected from the tool.



**Table of Content****Introduction****Safety Guidelines**

Maintenance and Storage

Before Use

Usage Precautions

Disassembly/Damage/Removal

Cleaning the Product

Getting Started

Safety Reminders

Appearance and Dimensions

Accessories

Setup

Specifications

Operations

Normal Charge

Fast Charge

ECU Reflash

History

Optimus

Optimus Installation

Using Optimus

Support Information**Warranty**

Warranty

YOUR 1012EVO IS GUARANTEED BY E-XTEQ //////////

Warranty

****For specific customers warranty questions, please contact us directly.****

Limited Warranty

E-XTEQ LLC products are warranted to be free of defects in materials, manufacturing, and workmanship for a period of one (1) year from date of purchase. This limited warranty applies to E-XTEQ products only and does not cover any other equipment. This limited warranty DOES NOT COVER static damage, misuse or abuse, normal wear and tear, water damage, overvoltage damage, dropping the unit, causing damage to it. E-XTEQ is not responsible nor liable for any incidental or consequential damage and will be subject to warranty voidability.

The warranty is also void if the client or any person outside E-XTEQ members facilities tries to disassemble the unit or to modify any of the parts or the cable assembly.

CLIENT and the Client Parties further acknowledge and agree that the total liability for any loss, physical damage, or theft while at any location other than the certified E-XTEQ Repair Locations is subject to warranty void and falls on the client.

E-XTEQ shall not be liable for any delays or damages caused by forces outside their control such as work stoppages, weather, shipping delays, acts of terrorism, war, strikes, catastrophes, or acts of God. This Warranty and any dispute between the parties will be construed under the laws of the State of Michigan without regard to conflicts of laws principles.

*Before sending a unit back for repair, an RMA (Return Materials Authorization) number must be obtained by contacting E-XTEQ Technical Support (see last page for reference). E-XTEQ will ascertain if the unit needs to come in for repair or replacement. If the unit must be replaced, E-XTEQ will provide full instructions for the end user to receive the replacement parts in the shortest delay.

What is covered and for how long?

All accessories are backed by 1-Year Warranty for manufacturer defects only.

All accessories with a 1-Year Warranty are listed below.

Please read "How to obtain warranty" instructions to receive the correct parts and prevent any charges.

**Table of Content****Introduction****Safety Guidelines**

Maintenance and Storage

Before Use

Usage Precautions

Disassembly/Damage/Removal

Cleaning the Product

Getting Started

Safety Reminders

Appearance and Dimensions

Accessories

Setup

Specifications

Operations

Normal Charge

Fast Charge

ECU Reflash

History

Optimus

Optimus Installation

Using Optimus

Support Information**Warranty****ACCESSORIES:**

-AC Power Cord

-Charge Cable with Clamps Remote Clamps

-Printer

-USB Cable

"E-XTEQ LLC" warrants to the original consumer purchaser that the product identified is free from defects in material and workmanship under normal use and service for the warranty period. This limited warranty does not extend to resellers, to used products that are resold. The warranty period commences upon the date of delivery to the original consumer purchaser and continuing for the following specified period after that date.

What is not covered?

This Standard Limited Warranty is conditioned upon proper use of the product. This Standard Limited Warranty does not cover:

- Defects or damage caused by accident, misuse, abnormal use, abnormal conditions, improper storage, neglect, or unusual physical, electrical, or electromechanical stress.
- Defects or damage caused by exposure to liquid, moisture, dampness, weather conditions, sand, dust, or dirt that is inconsistent with the specifications and instructions applicable to the product according to the user manual and the applicable terms and conditions.
- Scratches, dents, and cosmetic damage.
- Defects or damage caused by pressing on a touch screen with excessive force or with an object for use on the product's touch screen.
- Equipment that has the serial number or the enhancement data code removed, defaced, damaged, altered, or made illegible.
- Ordinary wear and tear.
- Defects or damage caused using accessories, products, or ancillary/peripheral equipment not furnished or approved by E-XTEQ.
- Defects or damage caused by improper testing, operation, maintenance, software, installation, repair service or parts, or adjustment not furnished or approved by E-XTEQ.
- Defects or damage resulting from external causes such as collision with an object, fire, flooding, windstorm, lightning, earthquake, theft, acts of terrorism, war, strikes, catastrophes, improper use of any electrical source, or acts of God.

Warranty does not cover any product if:

- a. The use of a third-party which does not meet E-XTEQ specifications or has not been specifically approved.
- b. Tampering, as evidenced by, for example, a broken seal or seals.
- c. The product was subjected to external forces beyond normal use; or
- d. Product repair not furnished or approved by E-XTEQ.

**Table of Content****Introduction****Safety Guidelines**

Maintenance and Storage

Before Use

Usage Precautions

Disassembly/Damage/Removal

Cleaning the Product

Getting Started

Safety Reminders

Appearance and Dimensions

Accessories

Setup

Specifications

Operations

Normal Charge

Fast Charge

ECU Reflash

History

Optimus

Optimus Installation

Using Optimus

Support Information**Warranty**

If the product has any non-warranted damage, after-market modifications or out-of-specification, or non-approved parts that impair E-XTEQ's ability to evaluate whether damage or defects are covered by the warranty or E-XTEQ ability to make an in-warranty repair (e.g., a cracked screen that must first be removed), then E-XTEQ will notify you and you will have the following options:

- You may have E-XTEQ return the product to you at your cost and, at your option, resubmit the product for warranty evaluation of in-warranty repair after the impairing condition has been repaired, corrected, or reversed; or replaced.
 - You may have E-XTEQ repair, correct, or reverse the impairing condition at your cost, prior to E-XTEQ's provision of such warranty evaluation or in-warranty repair. E-XTEQ will not make any warranty determinations or repairs until the impairing condition has been repaired, corrected, or reversed.
- Under no circumstances will E-XTEQ be obligated to maintain, restore, or repair any after-market changes to the Product's hardware.

What is E-XTEQ's obligations?

During the applicable warranty period, provided the Product is returned to E-XTEQ in accordance with the terms of this Standard Limited Warranty and exhibits an in-warranty defect, E-XTEQ will, at E-XTEQ's sole option, either repair the in-warranty defect without charge, subject to the conditions above or replace the product without charge. E-XTEQ may, at E-XTEQ's sole option, use rebuilt, reconditioned, or new parts or components when repairing any product, or may replace the product with a rebuilt, reconditioned, or new product. All repaired/replaced products will be covered by the terms of E-XTEQ Standard Limited Warranty for a period equal to the remainder of the original Standard Limited Warranty on the original product or for ninety (90) days, whichever is longer. All replaced products, parts, components, boards, and equipment shall become the property of E-XTEQ. Except to any extent required by applicable law, transfer or assignment of this Standard Limited Warranty is prohibited.

During the applicable warranty period, provided the product is returned in accordance with the terms of this Standard Limited Warranty, E-XTEQ will repair or replace the Product, at E-XTEQ's sole option, without charge. E-XTEQ will, at E-XTEQ's sole option, either repair the in-warranty defect without charge, subject to the conditions above or replace the product without charge. E-XTEQ may, at E-XTEQ's sole option, use rebuilt, reconditioned, or new parts or components when repairing any product, or may replace the product with a rebuilt, reconditioned, or new product.



Table of Content

Introduction

Safety Guidelines

Maintenance and Storage

Before Use

Usage Precautions

Disassembly/Damage/Removal

Cleaning the Product

Getting Started

Safety Reminders

Appearance and Dimensions

Accessories

Setup

Specifications

Operations

Normal Charge

Fast Charge

ECU Reflash

History

Optimus

Optimus Installation

Using Optimus

Support Information

Warranty

What must you do to obtain warranty service?

To obtain service under this Standard Limited Warranty, you must call E-XTEQ Customer Support department, and provide the information needed by the support team. Once the information provided by the customer is confirmed, the support team will provide different service options.

Before sending a unit back for repair, an RMA (Return Materials Authorization) number must be obtained by E-XTEQ Technical Support. Devices/tools must be shipped for repair with the RMA number provided by E-XTEQ support team, or accompanied by, the sales receipt or comparable proof of purchase showing the original date of purchase by the original consumer purchaser, the serial number of the Product, and the seller's name and address.

If E-XTEQ determines that any Product is not covered by this Standard Limited Warranty, you must pay all parts, shipping, and labor charges for the repair or return of such Product.

What are the limits on E-XTEQ's liability?

This standard limited warranty sets out the full extent of E-XTEQ's responsibilities and the exclusive remedy regarding the products.

All implied warranties, including without limitation, implied warranties of merchantability and fitness for a particular purpose, are limited to the duration of this limited warranty.

In no event shall E-XTEQ be liable for damages more than the purchase price of the product or for, without limitation, commercial loss of any sort; loss of use, time, reputation, opportunity, goodwill, profits or savings; inconvenience; loss, corruption, or disclosure of data or information that occurs during the warranty process; incidental, special, consequential or punitive damages; or damages arising from the use or inability to use the product. Some states and jurisdictions do not allow limitations on how long an implied warranty lasts, or the disclaimer or limitation of incidental or consequential damages, so the above limitations and disclaimers may not apply to you.

E-XTEQ makes no warranties or representations, express or implied, statutory or otherwise, as to the quality, capabilities, operations, performance or suitability of any third-party software or equipment used in conjunction with the product, or the ability to integrate any such software or equipment with the product, whether such third-party software or equipment is included with the product distributed by E-XTEQ or otherwise. Responsibility for the quality, capabilities, operations, performance, and suitability of any such third-party software or equipment rests solely with the user and the direct vendor, owner or supplier of such third-party software or equipment.



Table of Content

Introduction

Safety Guidelines

- Maintenance and Storage
- Before Use
- Usage Precautions
- Disassembly/Damage/Removal
- Cleaning the Product

Getting Started

- Safety Reminders
- Appearance and Dimensions
- Accessories

Setup

- Specifications

Operations

- Normal Charge
- Fast Charge
- ECU Reflash
- History

Optimus

- Optimus Installation
- Using Optimus

Support Information

Warranty

Nothing contained in the user manual, or any other document shall be construed to create an express warranty of any kind with respect to the product. No agent, employee, dealer, representative or reseller is authorized to modify or extend this standard limited warranty or to make binding representations or claims, whether in advertising, presentations or otherwise, on behalf of E-XTEQ regarding the products or this standard limited warranty.

Severability

If any portion of this Standard Limited Warranty is held to be illegal or unenforceable, such partial illegality or unenforceability shall not affect the enforceability of the remainder of the Standard Limited Warranty. You may not reproduce any content in whole or in part without E-XTEQ's prior written approval, except for your own personal use.

North America:

E-XTEQ

Technical Support

1-877-453-3265

support.usa@e-xteq.com

www.e-xteq.com

EMEA:

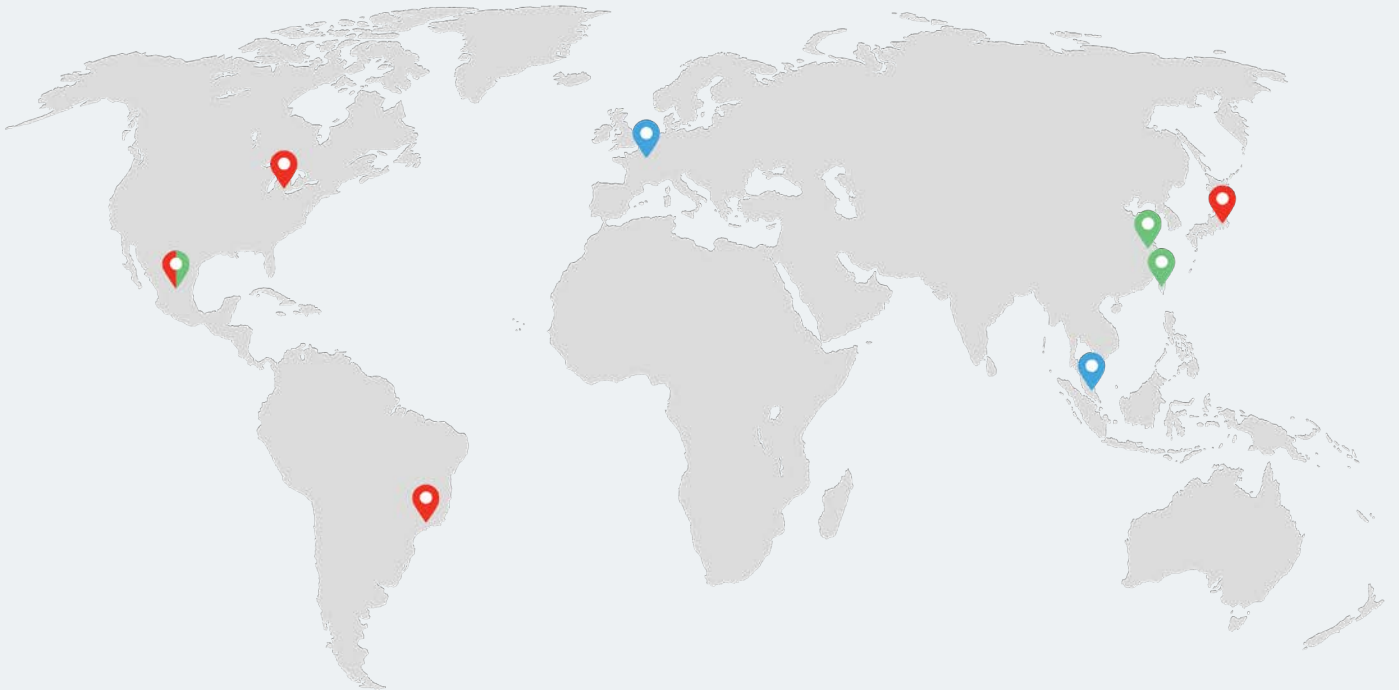
E-XTEQ

Technical Support

+33 1 30 07 13 30

support.eu@e-xteq.com

www.e-xteq.com



Paris, Singapore, Detroit, Nagoya, Sao Paulo, Shanghai, Taiwan, Mexico

www.e-xteq.com

© Copyright E-XTEQ 2022

Any reproduction of this document in any form whatsoever will be subject to prosecution.

Non-contractual photos.