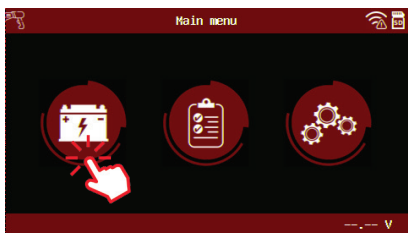
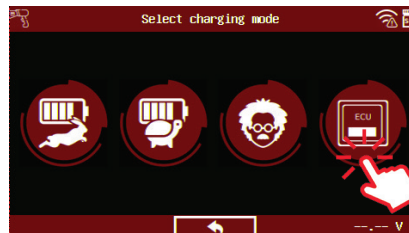


1 MAIN MENU

The Main Menu has three icons. Charge, History and Settings. Select the Charge Icon to Proceed.

**2 SELECT CHARGING MODE**

Select ECU Reflash Mode.

**3 CONNECT THE CLAMPS**

Make sure the clamps are connected.

**4 PRESS TO START**

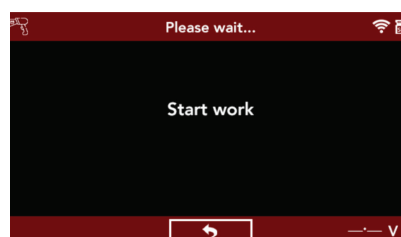
The Warning Screen will show a couple warnings before proceeding.

**5 PRESS TO START**

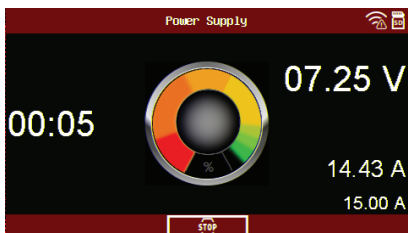
Select to start work.

**6 START WORK**

Press to start.

**7 POWER SUPPLY**

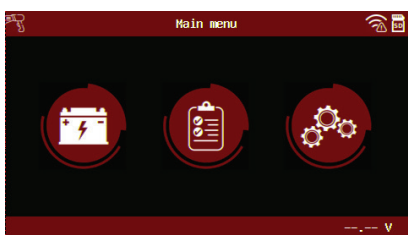
While charging, the screen will show these parameters.

**8 STOP DIAGNOSTIC**

Press to stop.

**9 MAIN MENU**

After stopping charge the screen will go back to the main menu.

**CONTACT US**

HOURS OF OPERATION (EST)
Monday - Friday: 8 am - 8 pm

TECH SUPPORT - USA
1-877-453-3265 English
support.usa@e-xteq.com

Comprehensive support also available
through www.e-xteq.com